

The Regulation and Quality Improvement Authority



The Regulation and Quality Improvement Authority



About Us

Assurance, Challenge and Improvement in Health and Social Care

The Role of RQIA



Health and Personal Social Services (Quality, Improvement and Regulation) (Northern Ireland) Order 2003

Specific Legislation

- Article 12 of the 2003 Order.
- Part III of the 2003 Order
- Article 13 of the 2003 Order.

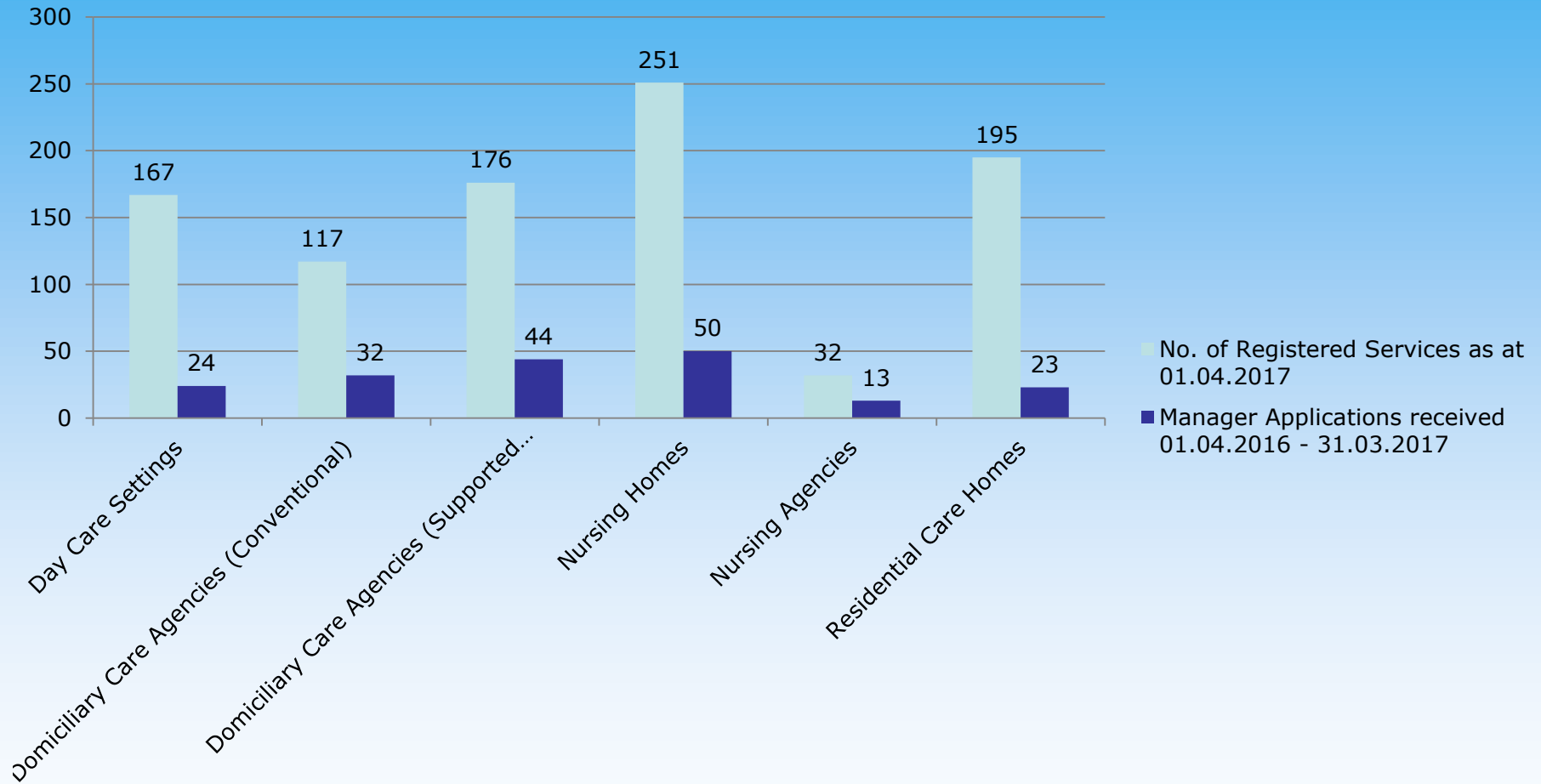
What that means

- Requirement to register
- Definition of registered provider
- Application to register as a manager

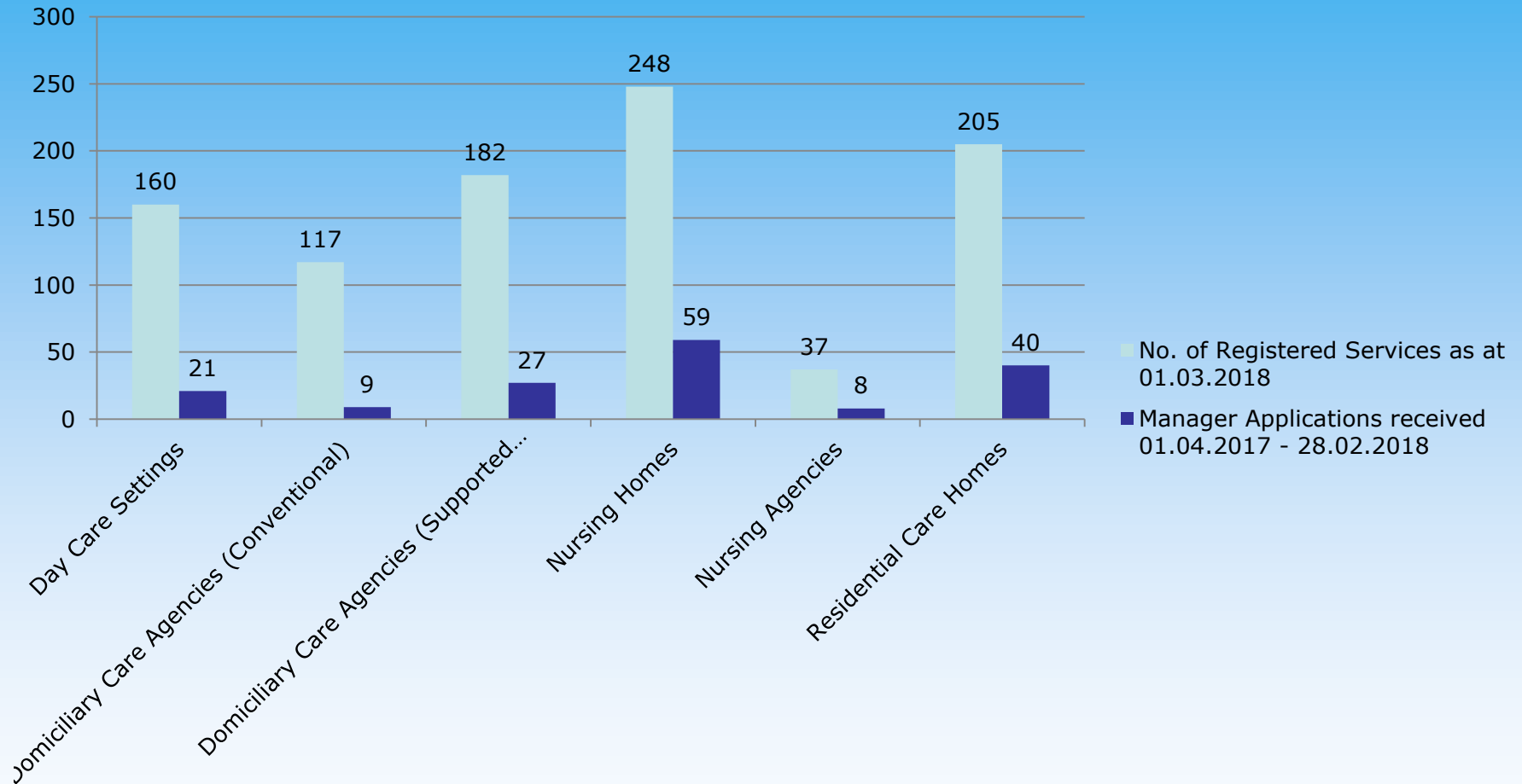
Who We Regulate (at 01 March 2018)

Type of Service	Total
Children's homes	45
Day care setting	160
Domiciliary care agency - conventional	117
Domiciliary care agency - supported living	182
Dental Practices	378
Nursing homes	248
Residential care homes	205
Other services (including: independent hospitals, cosmetic laser services, nursing agencies, residential family centres, adult placement agencies; independent medical agencies, voluntary adoption agencies)	104
Total	1,439

Manager Applications 2016/2017



Manager Applications 2017/2018

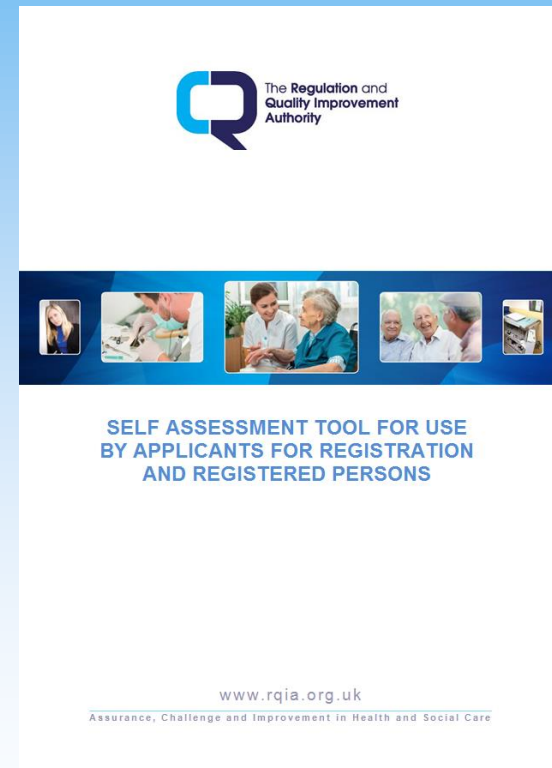


What's New?

Provider Guidance



Self Assessment Tool for Managers



Why We Produced Guidance

Requirement
to register

Provider
responsibility

Self
Assessment
Tool

Positive
outcomes for
service users



Fitness of a registered manager

We determine fitness by:

- assessing your completed application form
- ensuring you have the appropriate qualifications, skills and experience
- evidence of physical and mental fitness
- receipt of all documentation specified in the associated regulations

- Organise a meeting:
 - To discuss your responsibility
 - Forge partnership working
- Potential Outcomes:
 - Approved
 - Approved with conditions
 - Application refusal

Management of More Than One Regulated Service

- Article 13 (4) The 2003 Order states:

- *A person who carries on or manages, or wishes to carry on or manage, more than one establishment or agency shall make a separate application in respect of each of them.*

- Service Specific Regulations

- Written Evidence of the management arrangements for each service

Assessment Criteria

- Number and type of service
- Number of service users availing of the respective services
- Nature and complexity of the needs
- Geographical proximity of the services
- Day to day management arrangements when the manager is not present at each separate service

Absence of Registered Manager

Notification

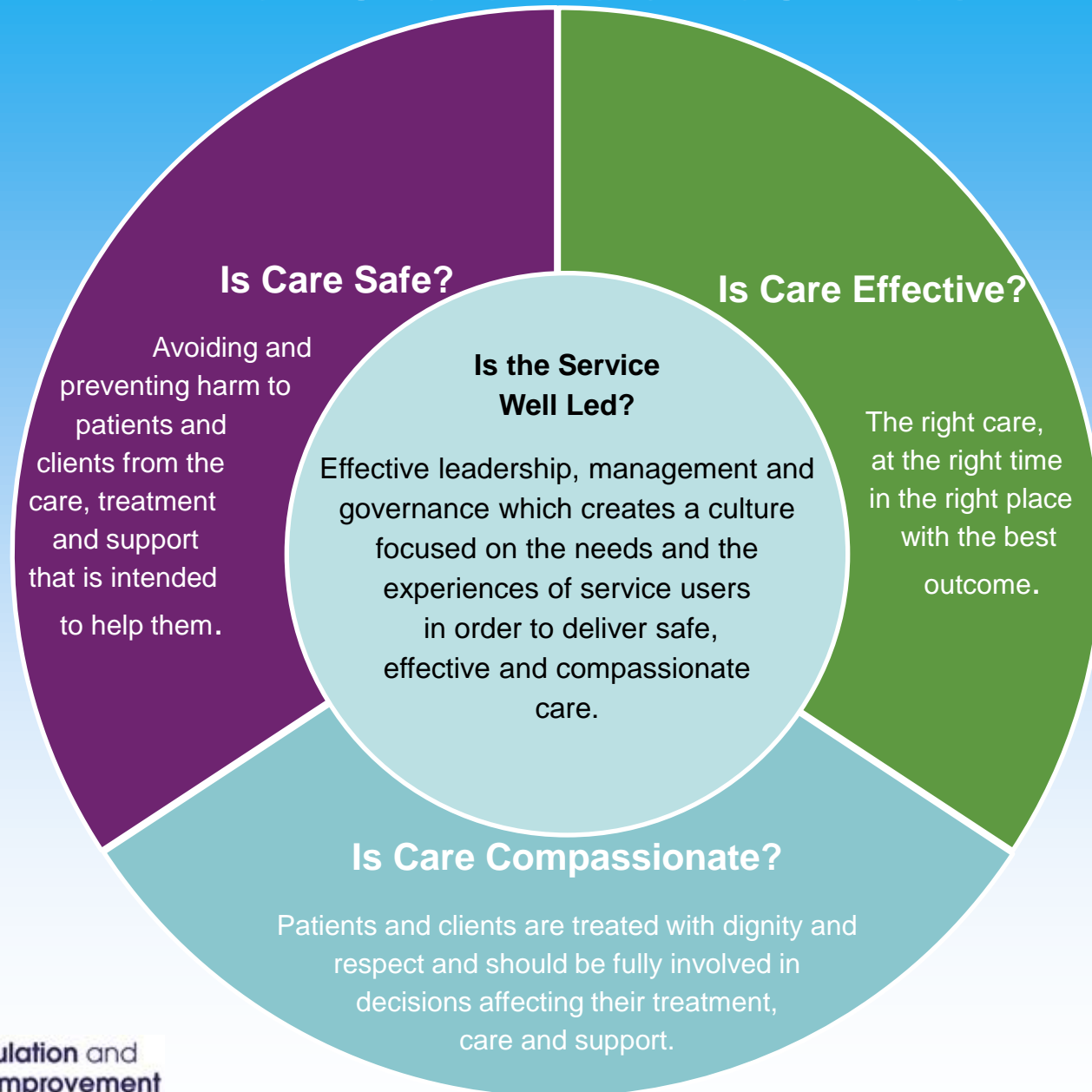
Proposed
absence

Cover
Arrangements

Support



Stakeholder Outcomes



Self Assessment Tool

- Examine activities, systems and processes
- Assess against standards
- Consider improvements
- Action Plan